

# SX 06

## Stainless Steel, Borehole Deep Well Pumps



### FEATURES

- Rpm: 2900
- Rotation: CCW
- Maximum sand content is 50 gr/m<sup>3</sup>

### MATERIALS

**Diffuser & Impeller:**

AISI 304L - Stainless Steel

**Pump Shaft / Coupling:**

AISI 420 - Stainless Steel

**Strainer:**

AISI 304 - Stainless Steel

AISI 316 - Stainless Steel

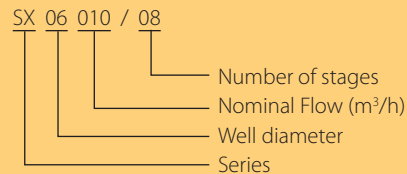
### APPLICATIONS

- Water supply from deep wells.
- Pressure boosting and water distribution in civil and industrial systems.
- Supply of surge tanks and reservoirs.
- Firefighting and washing systems.
- Water table level control.
- Irrigation.
- Mining Industry.
- Golf courses.

### SPECIFICATIONS

- Delivery: Up to 250 m<sup>3</sup>/h
- Head: Up to 650 m

### IDENTIFICATION

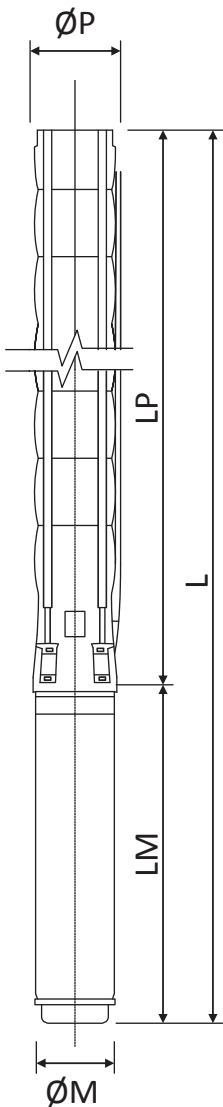


# SX 06

## Stainless Steel, Borehole Deep Well Pumps

### SX 06045

**Outlet Connection Diameter:**  
4" Inside Threaded



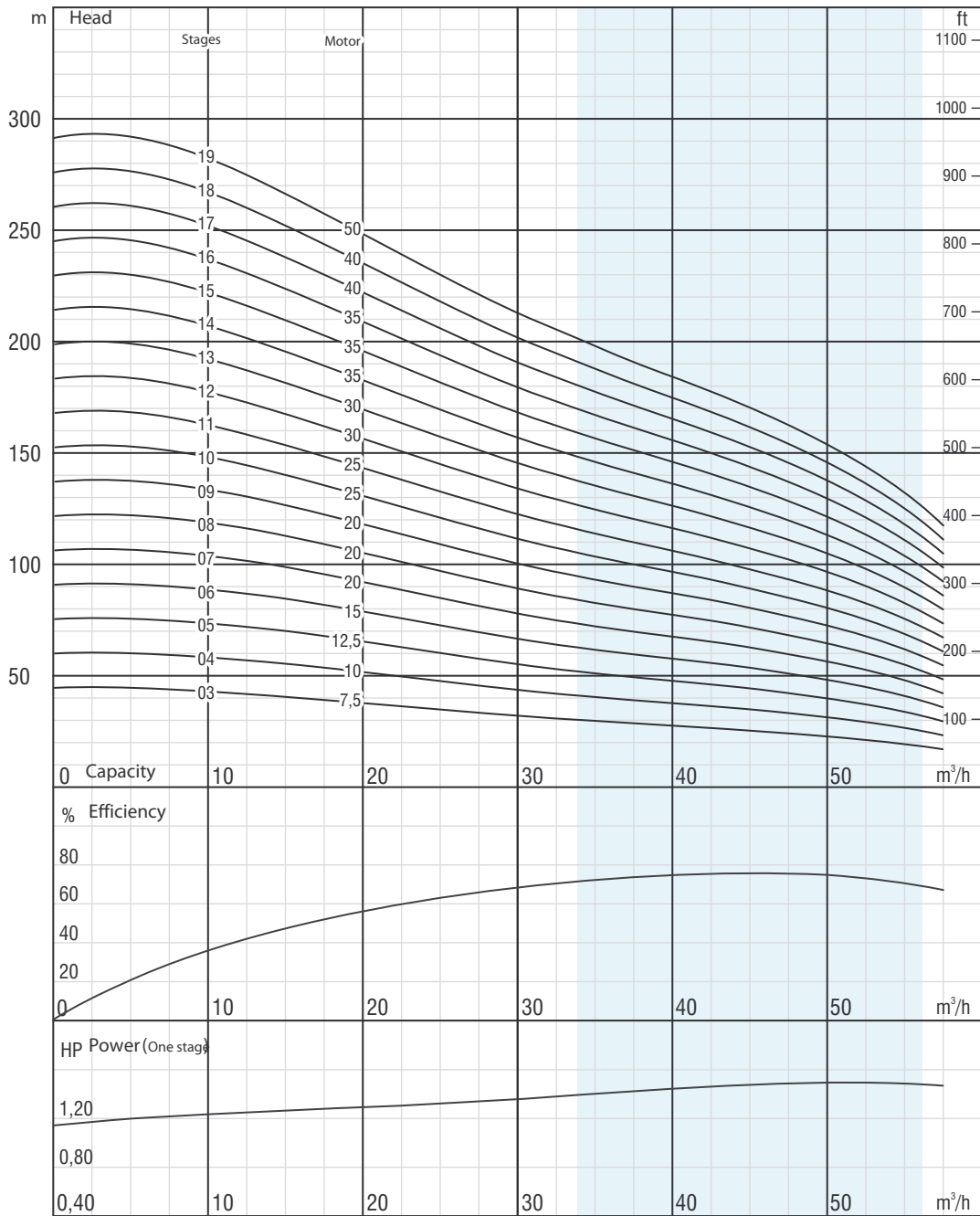
Product Code	Stage	Motor		Dimensions					Weight		
		kW	HP	L	LM	LP	$\varnothing M$	$\varnothing P$	Motor	Pump	Total
SX 06045/03	3	5,5	7,5	1268	678	590	142	144	43,5	12	56
SX 06045/04	4	7,5	10	1477	758	719	142	144	50	14	64
SX 06045/05	5	9,3	12,5	1632	800	832	142	144	55	16	71
SX 06045/06	6	11	15	1796	851	945	142	144	60	19	79
SX 06045/07	7	15	20	2031	973	1058	142	144	72	21	93
SX 06045/08	8	15	20	2144	973	1171	142	144	72	23	95
SX 06045/09	9	15	20	2257	973	1284	142	144	72	25	97
SX 06045/10	10	18,5	25	2392	1006	1386	142	144	76	27	103
SX 06045/11	11	18,5	25	2516	1006	1510	142	144	76	30	106
SX 06045/12	12	22	30	2718/2502	1106/890	1612	142/172	144	87/86	32	119/118
SX 06045/13	13	22	30	2820/2604	1106/890	1714	142/172	144	87/86	35	122/121
SX 06045/14	14	26,5	35	3066/2789	1217/940	1849	142/172	144	98/91	37	135/128
SX 06045/15	15	26,5	35	3168/2891	1217/940	1951	142/172	144	98/91	39	137/130
SX 06045/16	16	26,5	35	3292/3015	1217/940	2075	142/172	144	98/91	41	139/132
SX 06045/17	17	30	40	3424/3157/3233	1247/980/1056	2177	142/172/192	144	103/103/129	43	146/146/172
SX 06045/18	18	30	40	3548/3281/3357	1247/980/1056	2301	142/172/192	144	103/103/129	46	149/149/175
SX 06045/19	19	37	50	3750/3463/3519	1347/1060/1116	2403	142/172/192	144	110/113/138	48	158/161/186

Product Code	Stage	Motor		Current	m <sup>3</sup> /h	0	22	29	36	43	47	50	58
		kW	HP			0	6	8	10	12	13	14	16
SX 06045/03	3	5,5	7,5	13,6	Head (meter)	46	38	34	31	28	26	24	19
SX 06045/04	4	7,5	10	17,2		61	51	46	41	37	35	32	25
SX 06045/05	5	9,3	12,5	20,8		77	64	57	51	46	44	40	31
SX 06045/06	6	11	15	23,7		92	76	69	62	56	52	48	37
SX 06045/07	7	15	20	33,1		107	89	80	72	65	61	57	44
SX 06045/08	8	15	20	33,1		122	102	91	82	74	70	65	50
SX 06045/09	9	15	20	33,1		138	115	103	93	83	78	73	56
SX 06045/10	10	18,5	25	41,8		153	127	114	103	93	87	81	62
SX 06045/11	11	18,5	25	41,8		168	140	126	113	102	96	89	68
SX 06045/12	12	22	30	48,5		184	153	137	123	111	105	97	75
SX 06045/13	13	22	30	48,5		199	166	148	134	120	113	105	81
SX 06045/14	14	26,5	35	56,4		214	178	160	144	130	122	113	87
SX 06045/15	15	26,5	35	56,4		230	191	171	154	139	131	121	93
SX 06045/16	16	26,5	35	56,4		245	204	183	165	148	139	129	100
SX 06045/17	17	30	40	64,6		260	217	194	175	157	148	137	106
SX 06045/18	18	30	40	64,6		275	229	206	185	167	157	145	112
SX 06045/19	19	37	50	81,6		291	242	217	195	176	166	153	118

# SX 06

## Stainless Steel, Borehole Deep Well Pumps

SX 06045



The right to change design and all specifications without prior notice reserved.

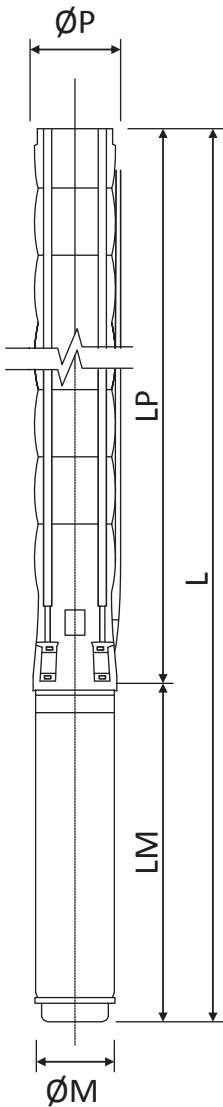
ISO 9906 Annex A

# SX 06

## Stainless Steel, Borehole Deep Well Pumps

### SX 06045

**Outlet Connection Diameter:**  
4" Inside Threaded



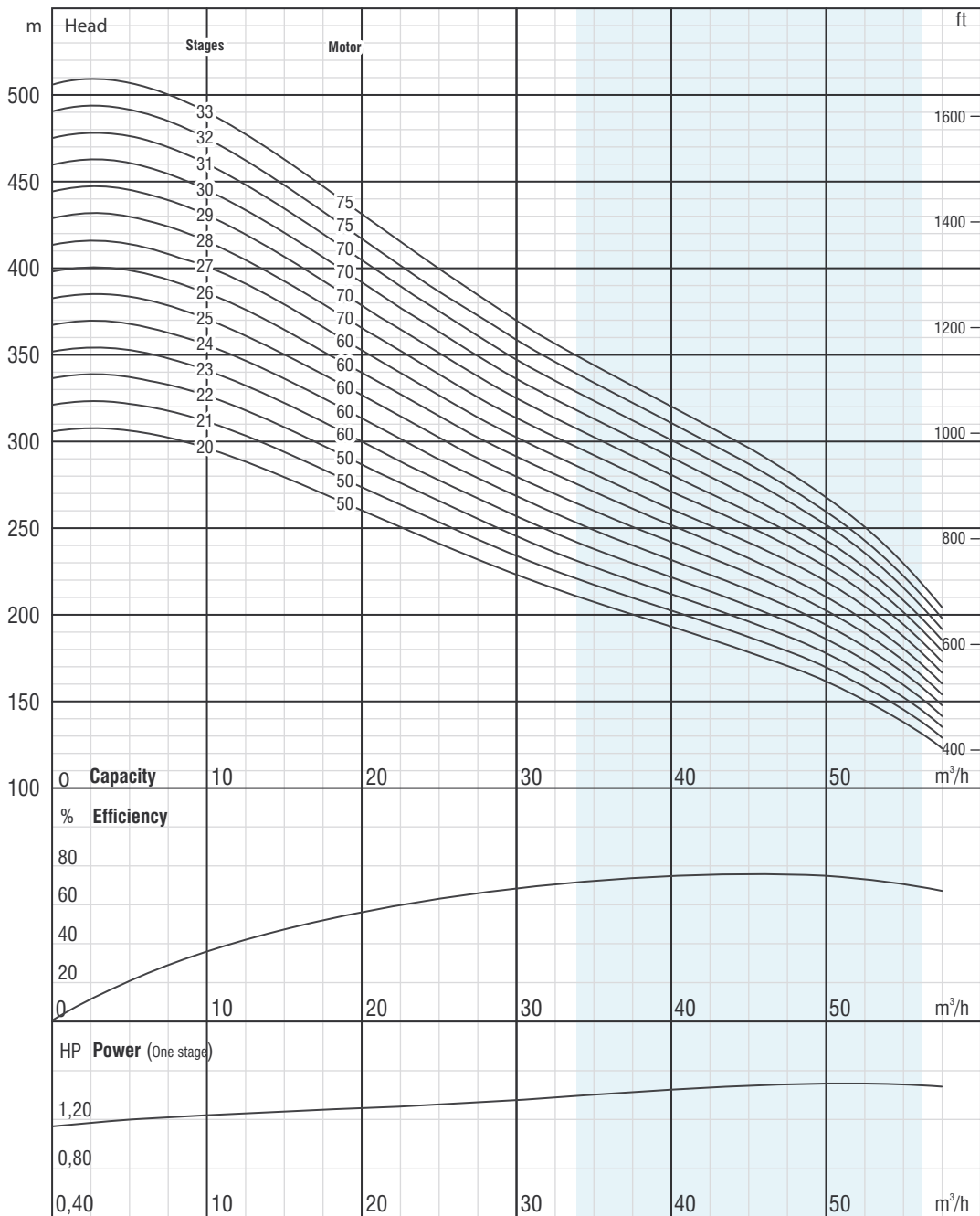
Product Code	Stage	Motor		Dimensions					Weight		
		kW	HP	L	LM	LP	$\text{ØM}$	$\text{ØP}$	Motor	Pump	Total
SX 06045/20	20	37	50	3852/3565/3621	1347/1060/1116	2505	142/172/192	144	110/113/138	51	161/164/189
SX 06045/21	21	37	50	3954/3667/3723	1347/1060/1116	2607	142/172/192	144	110/113/138	53	163/166/191
SX 06045/22	22	37	50	4056/3769/3825	1347/1060/1116	2709	142/172/192	144	110/113/138	55	165/168/193
SX 06045/23	23	45	60	4005/4067	1139/1201	2866	172/192	144	127/152	58	185/210
SX 06045/24	24	45	60	4107/4169	1139/1201	2968	172/192	144	127/152	60	187/212
SX 06045/25	25	45	60	4209/4271	1139/1201	3070	172/192	144	127/152	63	190/215
SX 06045/26	26	45	60	4542/4604	1139/1201	3403	172/192	144	127/152	65	192/217
SX 06045/27	27	45	60	4644/4706	1139/1201	3505	172/192	144	127/152	67	194/219
SX 06045/28	28	52	70	4847/4915	1218/1286	3629	172/192	144	138/170	69	207/239
SX 06045/29	29	52	70	4949/5017	1218/1286	3731	172/192	144	138/170	71	209/241
SX 06045/30	30	52	70	5073/5141	1218/1286	3855	172/192	144	138/170	74	212/244
SX 06045/31	31	52	70	5175/5243	1218/1286	3957	172/192	144	138/170	76	214/246
SX 06045/32	32	55	75	5309/5345	1250/1286	4059	172/192	144	138/170	79	217/249
SX 06045/33	33	55	75	5444/5480	1250/1286	4194	172/192	144	138/170	81	219/251

Product Code	Stage	Motor		Current	m <sup>3</sup> /h	Head (meter)											
		kW	HP			0	22	29	36	43	47	50	58				
SX 06045/20	20	37	50	81,6	0	306	255	228	206	185	174	162	124				
SX 06045/21	21	37	50	81,6	0	321	268	240	216	195	183	170	131				
SX 06045/22	22	37	50	81,6	0	337	280	251	226	204	192	178	137				
SX 06045/23	23	45	60	90	0	352	293	263	236	213	200	186	143				
SX 06045/24	24	45	60	90	0	367	306	274	247	222	209	194	149				
SX 06045/25	25	45	60	90	0	383	319	285	257	232	218	202	155				
SX 06045/26	26	45	60	90	0	398	331	297	267	241	227	210	162				
SX 06045/27	27	45	60	90	0	413	344	308	278	250	235	218	168				
SX 06045/28	28	52	70	106	0	428	357	320	288	259	244	226	174				
SX 06045/29	29	52	70	106	0	444	370	331	298	269	253	234	180				
SX 06045/30	30	52	70	106	0	459	382	343	308	278	262	242	187				
SX 06045/31	31	52	70	106	0	474	395	354	319	287	270	250	193				
SX 06045/32	32	55	75	109	0	490	408	365	329	296	279	258	199				
SX 06045/33	33	55	75	109	0	505	421	377	339	306	288	267	205				

# SX 06

## Stainless Steel, Borehole Deep Well Pumps

SX 06045



The right to change design and all specifications without prior notice reserved.

ISO 9906 Annex A